

## Perftech, Inc.

Perftech, Inc specializes in the fabrication and supply of precision engineered flexible packaging that meets specific customer requirements for permeability.

We employ a variety of state-of-the-art perforating technologies to ensure we produce the most effective solution for your permeation needs.

Our perforating technologies are applied to numerous flexible substrates and packaging formats and can be found in an ever growing number of applications in the food, medical and industrial markets.



*PermaSure*<sup>TM</sup>  
Wound Contact  
Layers



*PermaSure*<sup>TM</sup>  
Wound Contact  
Layers

 perftech

251 Airport Road  
N. Aurora, IL  
60542

Phone: 630-554-0010  
Fax: 630-554-0630  
E-mail: [Info@perftechusa.com](mailto:Info@perftechusa.com)

*Superior Science.  
Superior Perforation.  
Superior Performance.*

## PermaSure Premium™

PermaSure Premium is our top of the line wound contact layer. This product boasts many important features which make it ideal for helping wounds heal faster, cleaner and more comfortably.

### **Versatile**

This material can be thermally laminated to a variety of absorbent backing materials.

### **Autoclavable**

This material can be autoclaved, ensuring sterility.

### **Tailor Made Wicking Properties**

Specially designed perforations can be customized to ensure rapid and efficient absorption of moisture.

### **Excellent Release Properties**

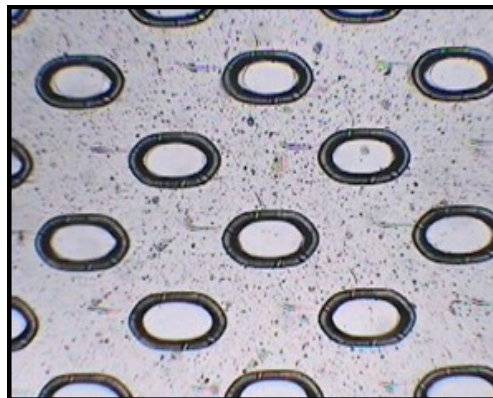
Made from DuPont Mylar PET at 14 microns thick, this layer is strong enough to withstand bending and twisting yet gentle enough to peel easily and cleanly away from the skin as it heals.

## PermaSure PET™

PermaSure PET offers many of the same features as our Premium line but instead of being designed for thermal laminations, this line is designed to be adhesively laminated to an absorbent backing.

PermaSure PET™ is offered in a variety of base film thicknesses and perforation patterns to allow users to select the most effective and cost efficient solution for their needs. Like PermaSure Premium™ it can be autoclaved to ensure sterility.

*Perforation patterns can be customized for your application. We can custom design a pattern to optimize wicking, absorption and other functions.*



## PermaSure Toll Perforation

For companies who already work with a preferred material but cannot get the necessary permeation levels in that material, toll perforation may be your answer.

Perftech offers multiple perforating technologies which may be utilized to give your substrate the optimal level of permeation to moisture and gas while still retaining its ability to be laminated to other structures.

Our brand new state of art production facility was designed to the standards you'd expect for production of consumable medical products. Positive pressure air flow, special epoxy covered floors, electric fork trucks and extensive pest control features help ensure your product is converted as cleanly as possible.

### **Perftech, Inc.**

251 Airport Road  
N. Aurora, IL  
60542

Phone: 630-554-0010  
Fax: 630-554-0630  
E-mail: [Info@perftechusa.com](mailto:Info@perftechusa.com)